

Floor to Floor Floor System for Heavy Loads

i920[®]



Description

The i920[®] floor expansion joint system is a cost effective solution for high load bearing spaces that encounter vehicular traffic such as parking garages, warehouses and more.

Key Features

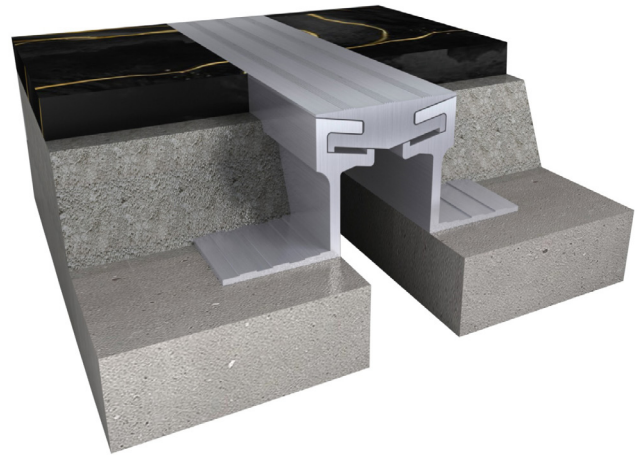
- Designed with a crisp, narrow surface profile to minimize visual sightline.
- High loading capacity capable of withstanding heavy maintenance equipment.
- Self-Centering .
- Ideal for large Civil and Government projects.
- Alignment pins allow for easy continuous straight installation.

Materials

Aluminum: Alloy types of 6061-T6, 6063-T6, 6005A, or 5052-H32 sheet goods.

Quality

- Furnish horizontal and vertical rated systems from a single Manufacturer to ensure compatibility. Intersection of/ or transition between dissimilar systems is not allowed unless reviewed and approved by AHJ.



Application Instructions

Installation: Joint systems: Install in accordance with manufacturer's instructions.

Align work plumb, level and flush with adjacent surfaces. Mechanically anchor to substrate. Allowances should be made where actual structural gap at time of installation varies from nominal design gap. No shimming of frames is permitted. Coordinate with work of other Sections.

If concrete blockouts (rebates) are required, ensure continuous support equal to surrounding substrate structural values.

Fire Rated Assemblies: Where required, install to manufacturer's instructions.

Moisture Barrier: Where required, install to manufacturer's instructions.

Floor to Floor
Floor System for Heavy Loads



i920[®]

Protect: the completed Expansion Control system work from damage during construction. Damage protection includes surface abrasion and overloading of coverplate by materials handling equipment and construction waste/debris. Protection from environmental factors required throughout installation process until Project Closeout. Protection includes but is not limited to rain events, moisture protection, exposure to temperature fluctuations or direct sunlight for temperature sensitive product offerings.

Store

Store components in original containers in a clean, dry location. Ensure temperature or moisture sensitive components are stored in a tempered location.

Contractor to provide temporary protective covers on all installed finished surfaces. Protection is required to guard against both surface abrasions as well as overloading of horizontal deck components by construction traffic .

Movement ± 25%

System	W		H1		H2		S		B		Movement +/-			
	Joint Width		Frame Height 1		Height 2		Sightline		Blockout		Horizontal		Vertical	
	US	mm	US	mm	US	mm	US	mm	US	mm	US	mm	US	mm
i920-25	1"	25	2"	50	*	*	1 1/3"	34	2 1/4"	57	1/4"	6	*	*
i920-50	2"	50	2"	50	*	*	2 1/3"	60	2 1/4"	57	1/2"	13	*	*

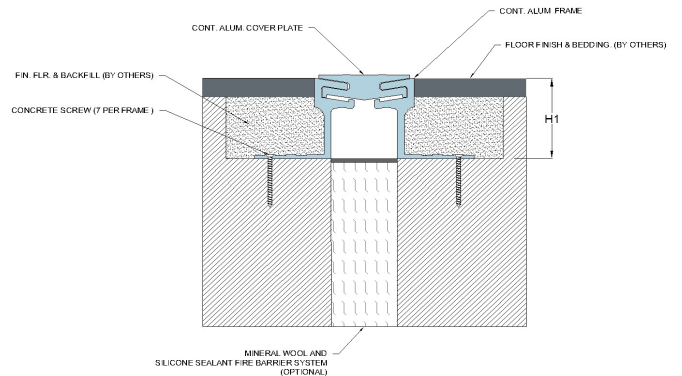
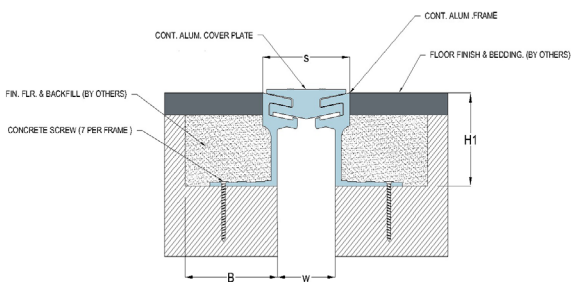
Floor to Floor
Floor System for Heavy Loads

i920[®]



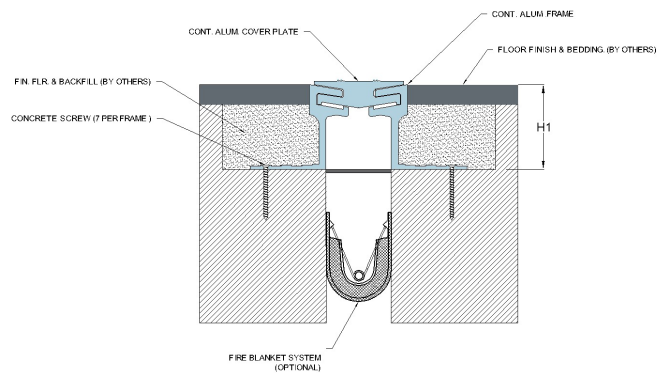
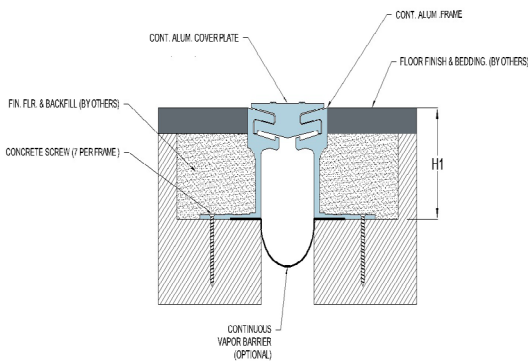
Series i920 - Floor to Floor

Series i920 - Mineral Wool & Sealant Fire Barrier Options



Series i920 - iFlex PVC Options

Series i920 - FireStop S30 Options



Product Data Sheet - December 2023, Version

Factory
 Website
 Email

: Abu Zabal Industrial Area
 : www.iChemEg.net
 : info@ichemeg.net

